



DE-PBS Coaching Networking Session

Thursday, November 18, 2021
1 - 2:30 pm



Meeting Expectations



We are...	Virtual Meetings
ENGAGED	<ul style="list-style-type: none">● Participate in discussions● Use video when possible● Unmute yourself or use chat box to ask questions
REFLECTIVE	<ul style="list-style-type: none">● Share questions you have for full group● Note follow up questions for DE-PBS team and/or individuals● Focus on problem solving around areas of concern
SUPPORTIVE	<ul style="list-style-type: none">● Share successes, ideas, useful resources● Listen with openness and understanding● Attend to your own needs

Coaches Networking Goals



- **Opportunity**

- ...to create space and time for fellow coaches to connect & collaborate around key topics of particular interest and need
- ...for district MTSS coaches to share best SEB practices, ask questions, gain support from one another
- ...for hearing diverse voices from across the state.

Welcome New MTSS Coaches!



- ~50% of our district coaches are new to the role & new to working with DE-PBS Project
- Survey notes to share:
 - Supports: Secondary schools, A&B, admin buy-in, district coordination, supporting adults
 - Position: Many hats and/or big hat being MTSS A&SEB



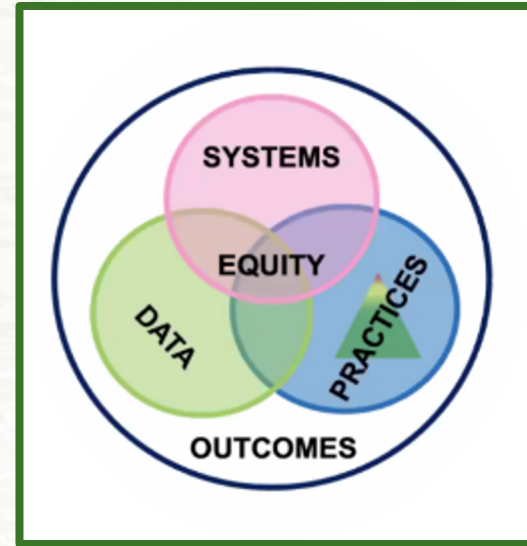
The DE-PBS Project serves as a technical assistance center for the Delaware DOE to actualize the vision to create safe and caring learning environments that promote the social-emotional and academic development of all children.

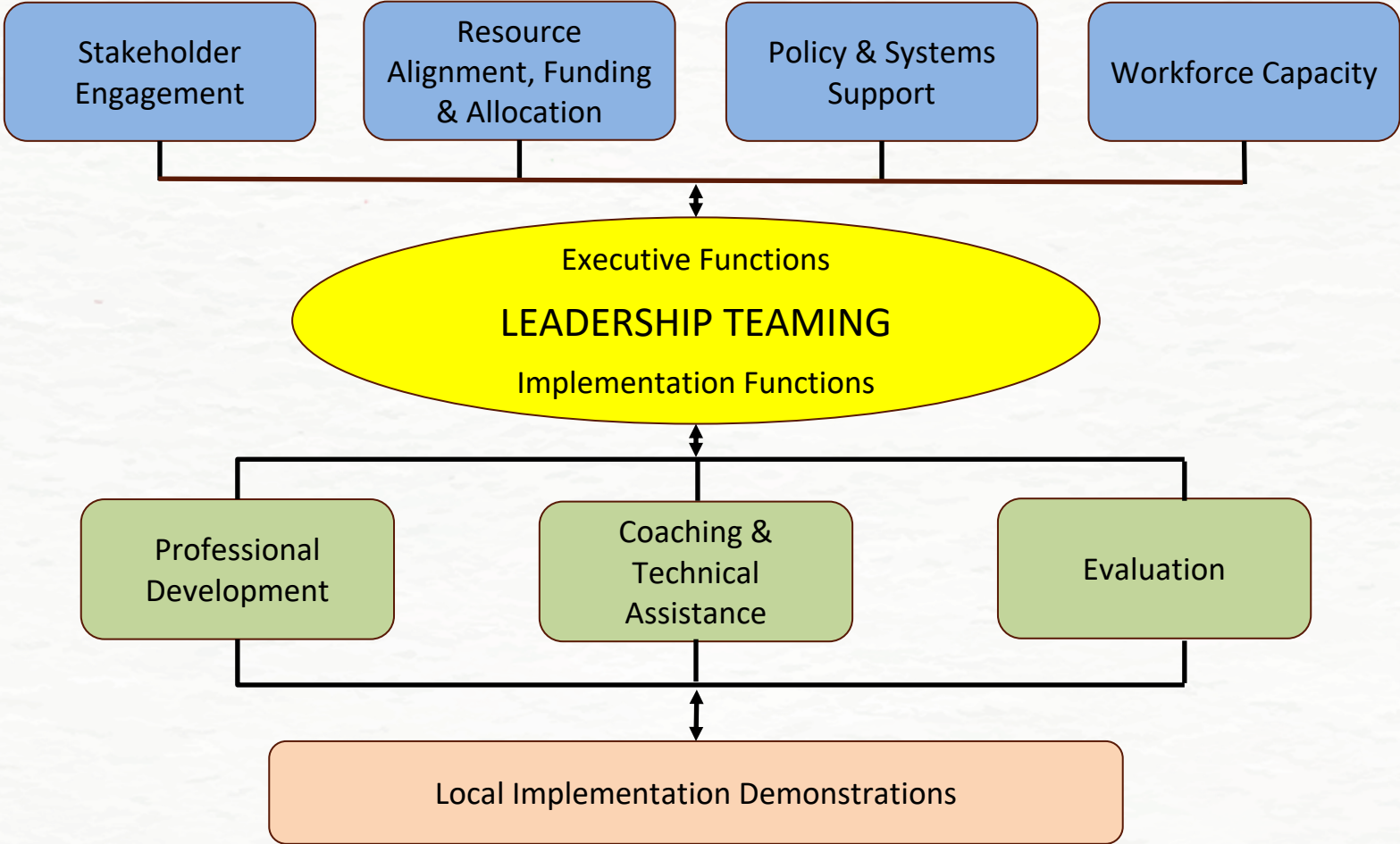
The statewide initiative is designed to build the knowledge and skills of Delaware educators in the concepts and evidence-based practices of Positive Behavior Support (PBS) as a Multi-tiered System of Support (MTSS).



MTSS organizes your district to achieve its identified outcomes (Academic and Social-Emotional, Behavioral (SEB)) through understanding its data, providing a continuum of practices, supporting staff through systems, and prioritizing equity.

www.pbis.org





What is coaching?

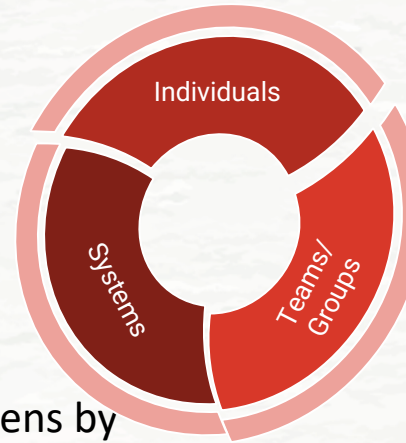


- Coaching refers to a district and school's ability to organize personnel and resources to help build capacity, develop skills, and become confident to implement evidence-based practices with fidelity.
- Effective coaching requires a diverse set of skills to work with people and teams.
- The goal of coaching in MTSS is to build local capacity, enhance MTSS fidelity across tiers, and improve student outcomes.

What is coaching?



- **Coaching Individuals:** focuses on teaching school personnel specific skills and how to apply those skills in context. Coaches provide support and give feedback to ensure use, confidence, and acceptable implementation on trained skills.
- **Coaching Teams or Groups:** focuses on helping teams develop their collaboration and facilitation skills, establish team operating procedures, understand group dynamics, and solidify data-driven decision making processes.
- **Systems Coaching:** focuses on building organizational support. This happens by creating high quality, consistent, sustainable support systems so school personnel can implement PBIS/SEB practices well. Coaches work with schools to build policies, practices, and resources to support PBIS/SEB. This level of coaching requires fluency with implementation science and frameworks.





*What is a strength of yours that you
bring to your role as a coach
(no matter the experience level)?*

Reflection Questions



- What do you wish you would have known when you started as a coach?
- Share one strategy (big or small) or tool/resource that works well in your coaching.
- How do you see the DE-MTSS Regs impacting your work as a district coach?
- How does your participation in DE-PBS Cadre meetings and professional learning opportunities influence or impact your work as a district coach?

A Year at a Glance in Coaching Guidance for MTSS-SEB Coaches

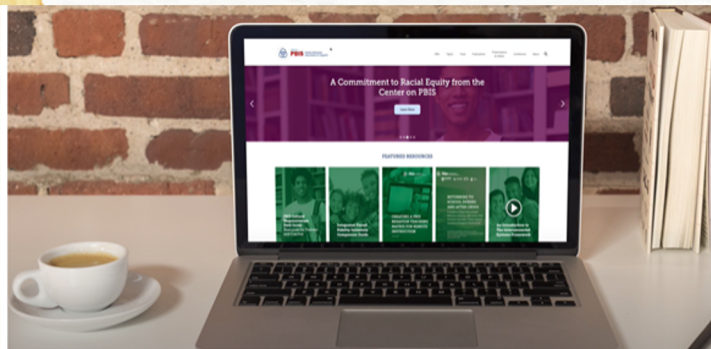


- This document is for you to use however best fits your needs.
- The intent of this document is to help you organize all of the many parts of PBS/MTSS
- It is organized by systems, practices and data. The front page is the overall picture and the second page is outlined by seasons.
- You are doing amazing work - be kind to yourself.

Website Orientation (DE-PBS / PBIS)



Center on PBIS | Video: Website Tour (3 minutes!)



DE-PBS Website Content:

- Foundations
- Professional Learning
- School Resources
- District Resources
- Topics
- Evaluation
- Who We Are

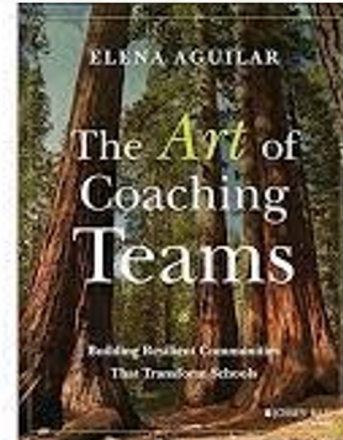
Resources

The Educator's Blueprint Podcast (MO-PBIS)

Topics:

- Series 1: Reinforcement
- Series 2: Mental Health, Wellness, Coping with Current Events
- Series 3: Maximizing Tier 2 Success
- Series 4: 2021 PBIS Leadership Forum
- Series 5: Supporting Students in the Classroom

Art of Coaching Teams



Next DE-PBS Cadre meeting: **December 16 @ 10:00**

Cadre Goals:

- Support district MTSS for SEB Coaches in their role
- Project updates & resource sharing
- Conduit between state to district to schools
- Networking among districts
- Feedback on Project activities/resources



Please take a few minutes to fill out our participant survey!



**Happy
Thanksgiving**
**Thank you for
networking with
us!**

