

School Climate Online Module Series Guidebook



General Module Information

In this section, general information about the School Climate Online Module Series is presented, including background information about the series, module structure, benefits of using the modules, and how to access and use the modules.

About the School Climate Module Series

Development of the modules is supported by a federal School Climate Transformation Grant (SCTG) awarded to the state of Delaware. The goal of the module series is to provide information to schools that can lead to improvements in school climate and behavioral outcomes. Each module aligns with a subscale on the *Delaware School Climate Scale* of the *Delaware School Surveys*, to aid schools in action planning based on their school climate data. However, a school does not have to participate in the surveys to use the modules.

Module Structure

Each module consists of approximately hour-long PowerPoint sessions with captioned audio. In addition, each module provides schools and educators with:

- An overview of the topic, its importance, and factors that contribute to both negative and positive aspects of the topic
- Recommended research-based strategies to improve the topic
- Resources and tools (available to download) to support the positive development of the topic
- Research-based module narratives, in the form of Word documents (that serve as the basis for the PowerPoint presentations), that focus on each topic in great detail

How to Access the Modules

There are several ways that schools and educators can access the modules:

- Educators can earn clock-hour credit for participating in the modules by registering for each module through PDMS. The titles of the available PDMS courses are:
 - Teacher-Student Relationships Module
 - Student-Student Relationships Module
 - Bullying Module
 - School-Wide Student Engagement Module
 - School Safety Module
- Educators can also join the School Climate Professional Development group on Schoology to access all modules. The access code is 2P5NM-F56JT.
- Each module is also available on the Delaware PBS website:
<http://wh1.oet.udel.edu/pbs/school-climate-modules/>

Recommended Uses for the Modules

The modules can be used in a variety of ways, such as for in-school professional development.

Participation can occur via:

- A whole school staff
- Professional learning communities (PLCs)
- Leadership teams
- Individuals

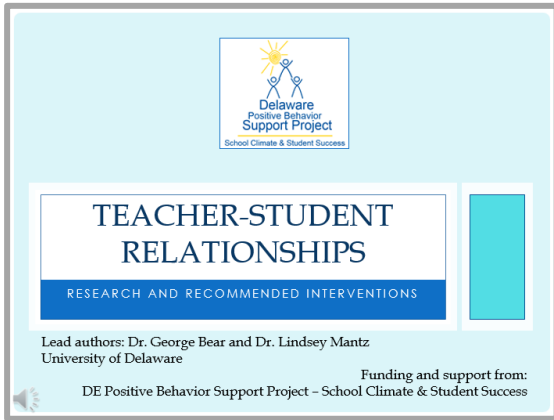
It is recommended that school teams (e.g., PBS teams, problem-solving teams) complete the modules together, rather than individually. This not only ensures that all team members view the content, but provides opportunities for discussion of the content and recommend strategies. For example, teams may discuss something new they learned about the topic or particular strategies they think would be effective in their school.

Module Benefits

The School Climate Online Module Series has several benefits for users:

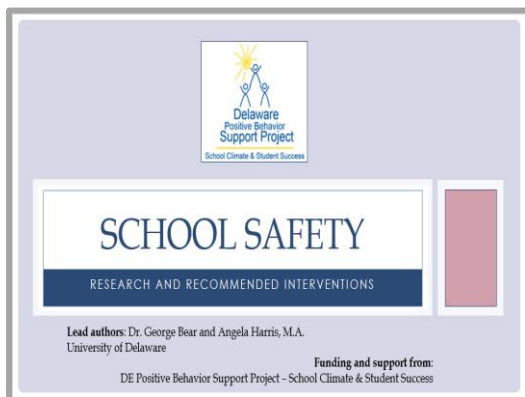
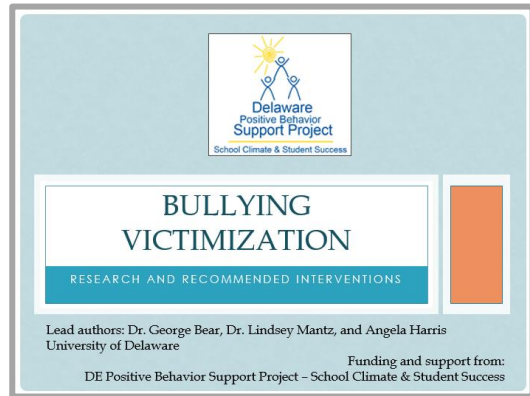
- They cover a range of school climate related topics that are of interest to districts, schools, and educators
- They can be completed online and are free
- Educators can earn clock-hour credit for participation
- Viewing time is approximately one hour per module
- Research-based information and evidence-based strategies and recommendations are provided in one place
 - Educators do not have to spend countless hours researching or reviewing research articles for the most effective strategies
- Module topics are tied to subscales on the *Delaware School Climate Scale*
 - Allows for action planning and professional development based on data

Module Inventory



This module focuses on supporting positive [Teacher-Student Relationships](#). It provides an overview of what teacher-student relationships are, why they are important, what factors contribute to both positive and negative teacher-student relations, and recommended strategies to improve these relationships.

This module focuses on preventing and decreasing [bullying victimization](#). It provides an overview of what bullying victimization is, the effects of bullying, what factors contribute to bullying, bullying prevention curricula and programs, and recommended strategies and interventions for decreasing bullying and bullying victimization.



This module focuses on developing [school safety](#). It provides an overview of what defines school safety, the primary factors that contribute to school safety, and recommended strategies and interventions to improve feelings of school safety.

This module focuses on supporting positive [student-to-student relationships](#). It provides an overview of what student-student relationships are, why they are important, what factors contribute to both positive and negative student relations, and recommended strategies to improve these relationships.

Delaware Positive Behavior Support Project
School Climate & Student Success

STUDENT-STUDENT RELATIONSHIPS

RESEARCH AND RECOMMENDED INTERVENTIONS

Lead authors: Dr. George Bear and Dr. Lindsey Mantz
University of Delaware

Funding and support from:
DE Positive Behavior Support Project – School Climate & Student Success

Delaware Positive Behavior Support Project
School Climate & Student Success

IMPROVING STUDENT ENGAGEMENT

RESEARCH AND RECOMMENDED INTERVENTIONS

Lead authors: Dr. George Bear and Angela Harris, M.A.
University of Delaware

Funding and support from:
DE Positive Behavior Support Project – School Climate & Student Success

This module focuses on promoting and [improving student engagement](#) in school. It provides an overview of what student engagement is, why it is important, what factors contribute to student engagement, and recommended strategies and interventions for increasing student engagement.